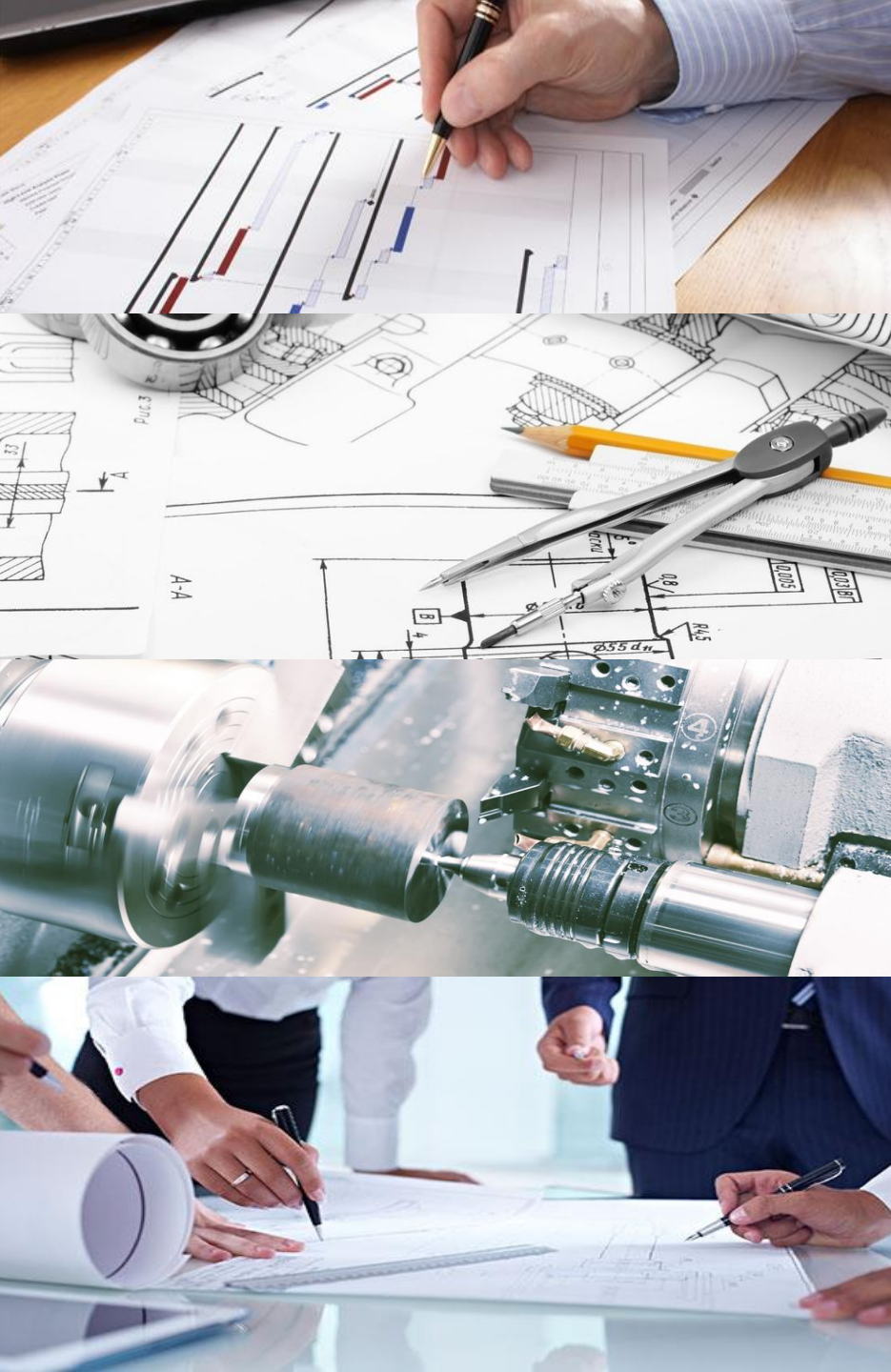




What I Wish I Knew: *Systems Engineering & Project Management*

Melissa Onishi
Department of Mechanical Engineering
University of Hawai'i at Manoa
19 September 2018

WHAT DO YOU DEFINE AS SUCCESS?





ESSENTIALS OF LEADERSHIP

*Project Manager
Systems Integrator
Finance Officer
Subsystem Leads*

Three C's to Successful Leadership

1. COMMUNICATION

2. CONSISTENCY

3. CLARITY



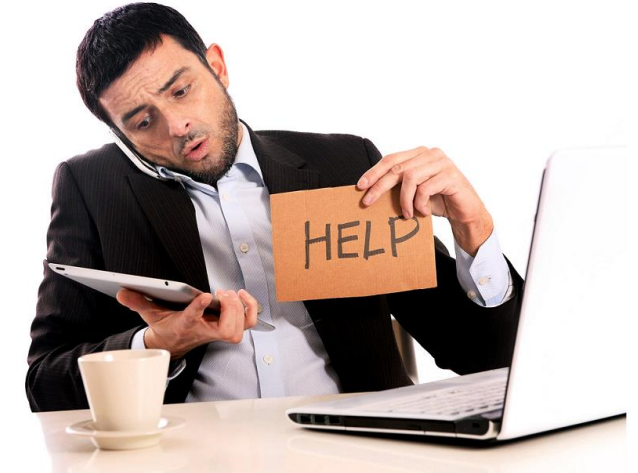
Understanding Your Teammates



Don't assume everyone operates the SAME way YOU do.

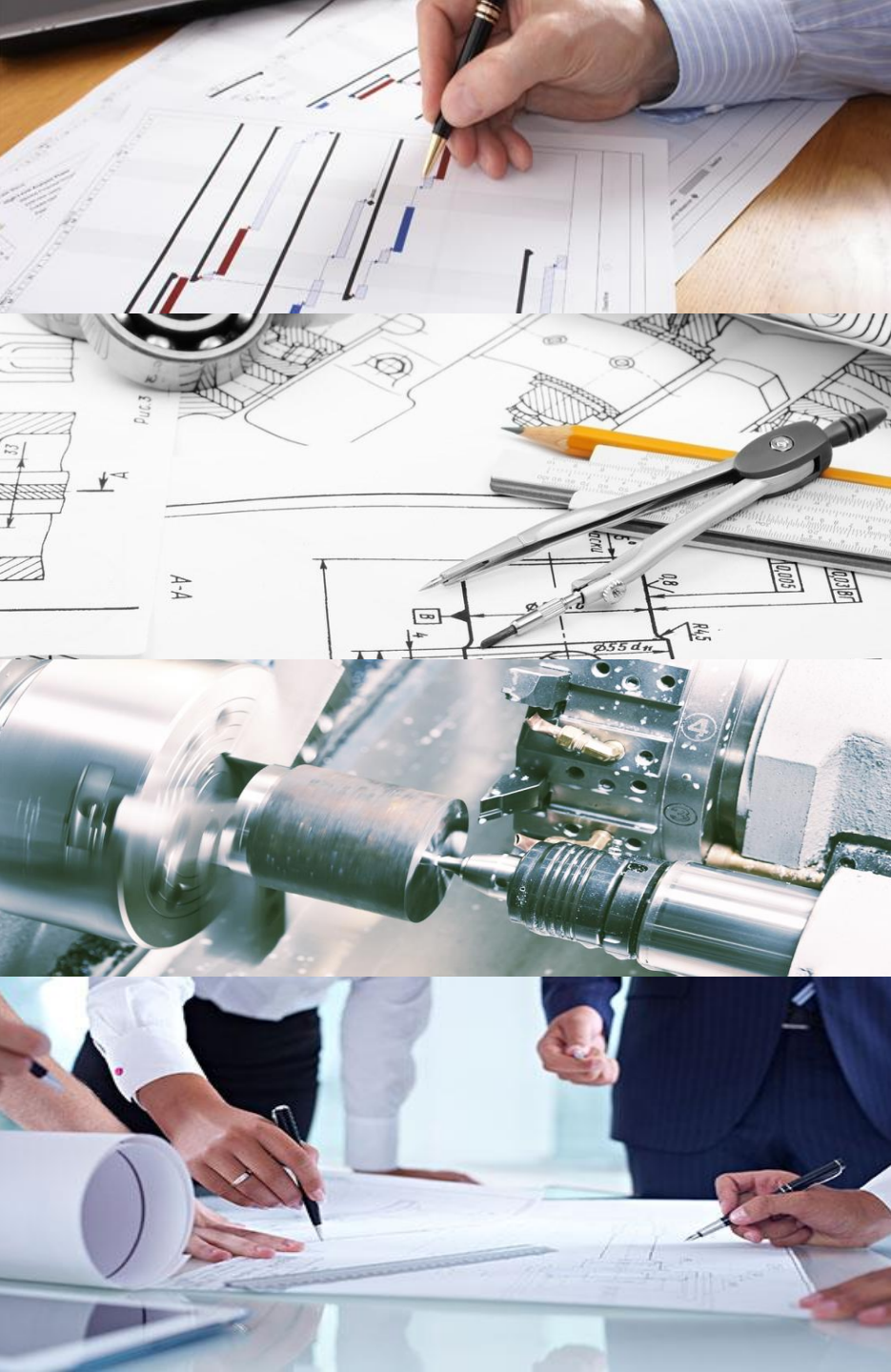


Delegate tasks that are based on your teammates' strengths and weaknesses.



Pay attention to how your teammates interact with one another.

**What does it take
to make my
design
functional?**

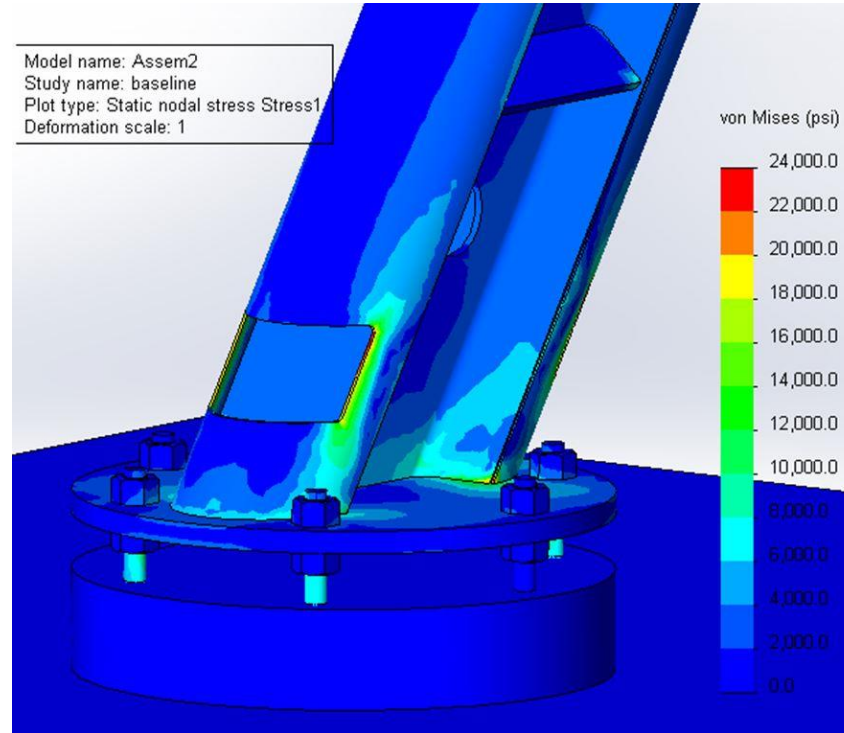
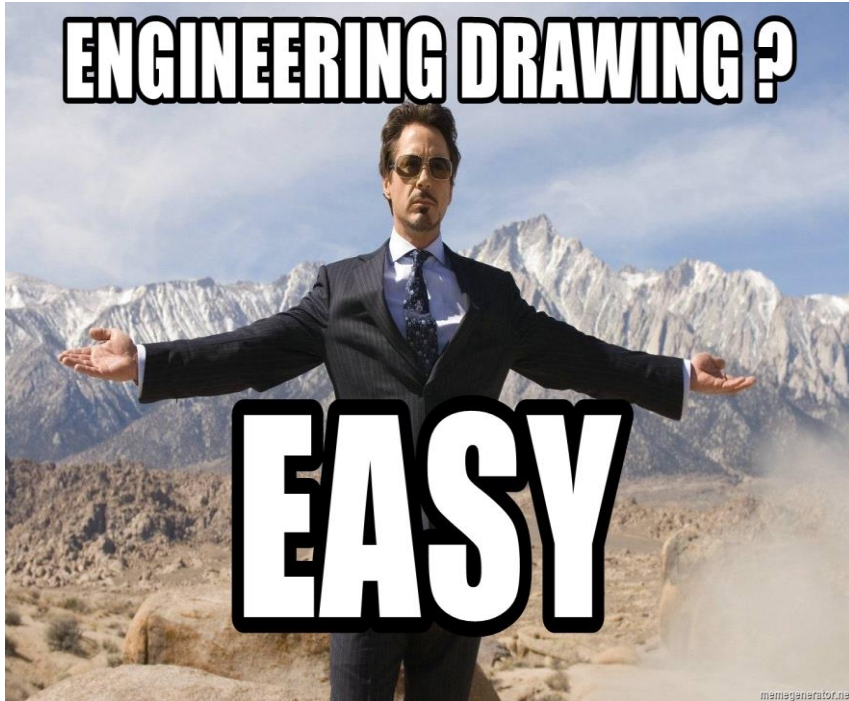


What kind of mindset should I have?

- 1. Be flexible and anticipate.**
- 2. Be efficient.**
- 3. See the big picture.**
- 4. Be prepared for criticism.**

The Truth About Being Good at 3D CAD

Doing actual Engineering Analysis like...



Having Healthy Paranoia



Every Time

- **QUADRUPLE CHECK YOUR DATA INPUT AND OUTPUT!**
- **Ask yourself does it “make sense?”**
- **Have multiple pairs of eyes review your work. 😊**

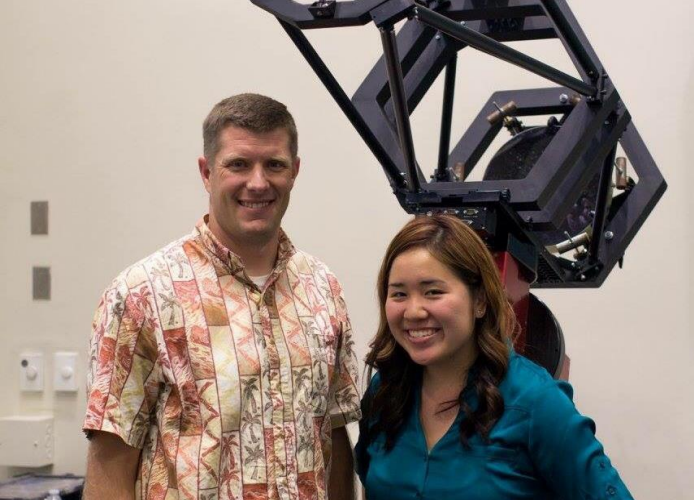
Bench Level Testing

WHEN MY PROTOTYPE DOESN'T WORK



ON THE FIRST TRY

- **Start off small, then work your way up.**
- **Use materials that are readily accessible and affordable.**



MY JOURNEY AS PROJECT MANAGER

Overcoming Team Challenges

Facing my Shortcomings

Surviving Senior Design

1. Get comfortable with being *uncomfortable*.
2. Choose your battles.
3. Time management is key.

QUESTIONS?